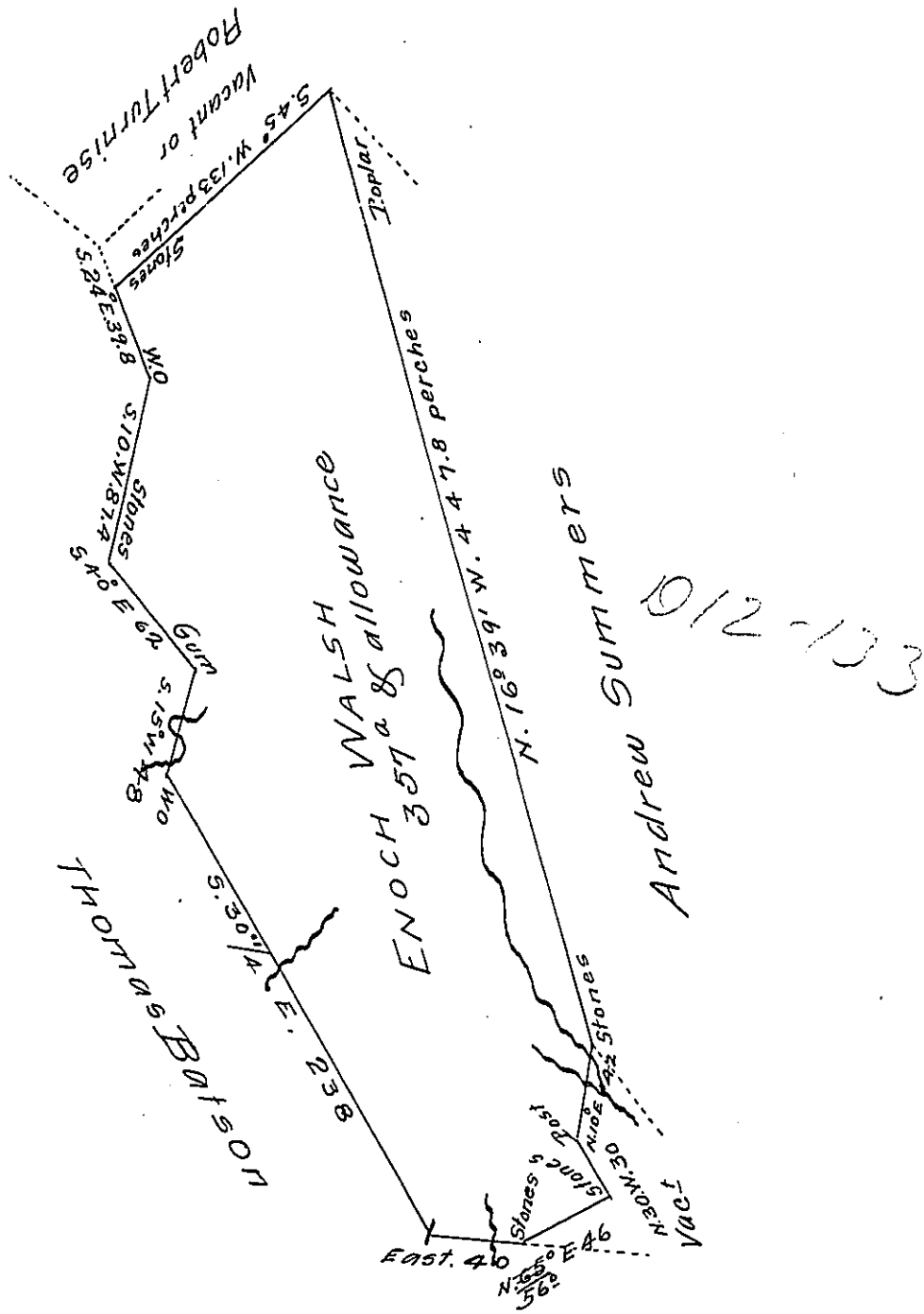


FORM NO 1.



Note. the above tract was unimproved
 at the date of its Warrant. J.W. D.S.C.

To J.S. S.G.

Situate now in Conemaugh township Somerset County late Bedford,
 and surveyed 20th May 1818. in pursuance of a Warrant dated
 * 26th January 1793. Granted to Enoch Walsh for 400^a

John Wells Deputy

To Jacob Spangler Esquire

Surveyor General of Penn^a * 26th March 1793

IN TESTIMONY that the above is a copy of the original remaining on file in
 the Department of Internal Affairs of Pennsylvania, made
 conformably to an Act of Assembly approved the 16th day of
 February, 1833, I have hereunto set my Hand and caused
 the Seal of said Department to be affixed at Harrisburg,
 this eighteenth day of June 1907

Henry Howell
 Secretary of Internal Affairs.